



ISSN: 2456-2912  
VET 2018; 3(4): 10-15  
© 2018 VET  
www.veterinarypaper.com  
Received: 09-05-2018  
Accepted: 11-06-2018

**Sattar Beig mohammadi**  
Department of Animal Science,  
Abhar Branch, Islamic Azad  
University, Abhar, Iran

**Kian Pahlevan Afshari**  
Department of Animal Science,  
Abhar Branch, Islamic Azad  
University, Abhar, Iran

**Hamid Reza Seyedabadi**  
Department of Animal  
Biotechnology, Animal Science  
Research Institute of IRAN  
(ASRI), Agricultural Research  
Education and Extension  
Organization (AREEO), Karaj,  
Iran

**Correspondence**  
**Sattar Beig mohammadi**  
Department of Animal Science,  
Abhar Branch, Islamic Azad  
University, Abhar, Iran

## Estimating the distance of genetic domestic goats in Iran inferred from D-loop region of mitochondrial DNA analysis and origins of candidate native goat ancestor

**Sattar Beig mohammadi, Kian Pahlevan Afshari, and Hamid Reza Seyedabadi**

### Abstract

The wild goat “bezoar” (*Capra aegagrus*) has been considered to be the strongest candidate for the ancestor of the domestic goats (*C. hircus*). This article describes the complete sequences of the mitochondrial DNA displacement loop (D-loop) region from Mahabadi goats. The control region (D-loop) is the most variable and non-coding portion of the mitochondrial genome. The genetic diversity and phylogenetic structure was analyzed in Mahabadi goat population by mitochondrial DNA sequences. It is estimated genetic distance between native goat and goat ancestor based on mtDNA. Recent analysis of the most of domestic goat individuals revealed a total of six different monophyletic mitochondrial DNA (mtDNA) haplogroups A, B, C, D, F, and G, with the A haplogroup representing >90% of individuals. Phylogenetic analysis was carried out using hyper variable region 1 (896 bp) obtained from 30 animals. All Mahabadi haplotypes were classified into A haplotype group and revealed remarkably high genetic distances within the population when compared with other goat populations from several places, indicating high genetic variation in the Mahabadi goat. After extracting DNA, displacement loop (D-loop) region of mtDNA was amplified with specific primers using PCR and after purification was sequenced. The phylogenetic tree was drawn with the consensus sequence of other similar sequences of different goats breeds and wild goat “bezoar” (*Capra aegagrus*) obtained from GenBank. In the phylogenetic tree, Mahabadi native goat was clustered with Switzerland, Romania, Austria, Cyprus, Jordan, Spain, Saudi Arabia, Albania, Turkey, Egypt, Kurdi Iran, Malaysia, Kyrgyzstan, Italy and ancestor of native goat breeds. The findings confirmed that Mahabadi goats was closed to *Capra aegagrus* compared to other domestic goats.

**Keywords:** Genetic diversity, *Capra aegagrus*, Mahabadi goat, mtDNA, phylogenetic, genetic distance

### Introduction

Domesticated goats (*Capra hircus*) are among the most important farm animals in many parts of the world, particularly Africa and Asia. Goats were thought to have been domesticated in the ninth and eighth millennia BC during the Pre-Pottery Neolithic B (PPNB) period, specifically between 8700 and 6800 cal BC in the Zagros Mountains, it is known for their hardiness, goats have adapted to many different habitats, including savannas, deserts, scrubs and mountain ranges, and are found in all types of ecological environments, particularly in tropical and dry regions, where other livestock species have difficulties surviving [3]. Goats are included in the entire range of production systems, from intensive production to small holders and nomadic human populations, and are raised around the world for their meat, milk, cheese, fiber and hides. Goats are also kept as pets or for entertainment or cultural and religious purposes. Angora goats appear in one color which is white to silver, but Mahabadi goats produce mohair in different natural colors which are a unique character of this breed. Keeping above in view in present study, the current phylogenetic status and genetic diversities of Mahabadi goat has been investigated in order to understand the genetic basis of this breed. Mitochondrial genome (mtDNA) analysis is a critical tool in the fields of evolutionary and population genetics, including molecular. The mitochondrial DNA (mtDNA) polymorphism,

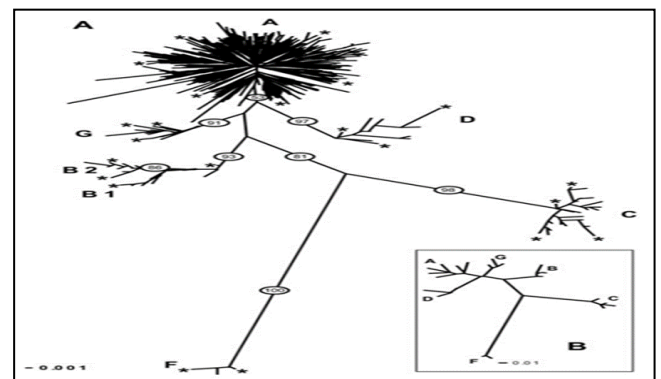
especially the displacement loop (D-loop) region, has been largely applied to understand phylogenetic relationships in many animal species, including cattle (Ilie *et al.* 2015) [15], pig (Li *et al.* 2015), sheep (Agaviezor *et al.* 2012) [1], chicken (Hoque *et al.* 2013) [14], horse (Zernekova *et al.* 2013) [32] and goat (Hoda *et al.* 2014; Pakpahan *et al.* 2015; Çinar Kul and Ertugrul, 2011) [13, 24, 8]. Previous studies on domestic goats identified at least four major mtDNA lineages (Joshi *et al.* 2004; Luikart *et al.* 2001; Sultana *et al.* 2003) [16, 20, 14]. Lineage A is the most diverse and widely distributed across all continents.

This article describes the complete sequences of the mitochondrial DNA displacement loop (D-loop) region from domestic goats and several domestic goat and also native goat ancestor "Capra aegagrus". The control region (D-loop) is the most variable and non-coding portion of the mitochondrial genome (Wilson *et al.* 1985) [31]. This region controls the mitochondrial DNA (mtDNA) replication by regulating the activities of various enzymes and proteins that are coded by the nuclear genes (Ghivizzani *et al.* 1993; Nass, 1995). The sequences of the control region vary greatly in different mammalian species, however, preservation of several conserved regions indicate fundamental harmony in its function (Saccone *et al.* 1991). Because of their rapid evolution (Brown *et al.* 1979), the control region sequences are valuable for investigating the genetic diversity and evolutionary relationships among species (Wilson *et al.* 1985) [31]. The extent and pattern of genetic variability in livestock species will contribute to the conservation of livestock genetic resources. On the basis of the previously mentioned archaeological studies and bio-geography, it is likely that the molecular studies of diversity in Iranian goats will yield new understanding of the origin and process of goat domestication, and will contribute to the resolution of goat phylogeny. More than 20 breed of goats have been recognized in Iran, these small breeds of goat are distributed over the western and north-west of Iran near to the Turkey and Iraqi borders.

Three wild species of the genus *Capra*, the bezoar (*C. aegagrus*), markhor (*C. falconeri*) and ibex (*C. ibex*), are closely related to the domestic goat (*C. hircus*), and it has been suggested that these species contributed to the gene pool of domestic goats, possibly via early translocations of animals and feralization prior to the global spread of goats.

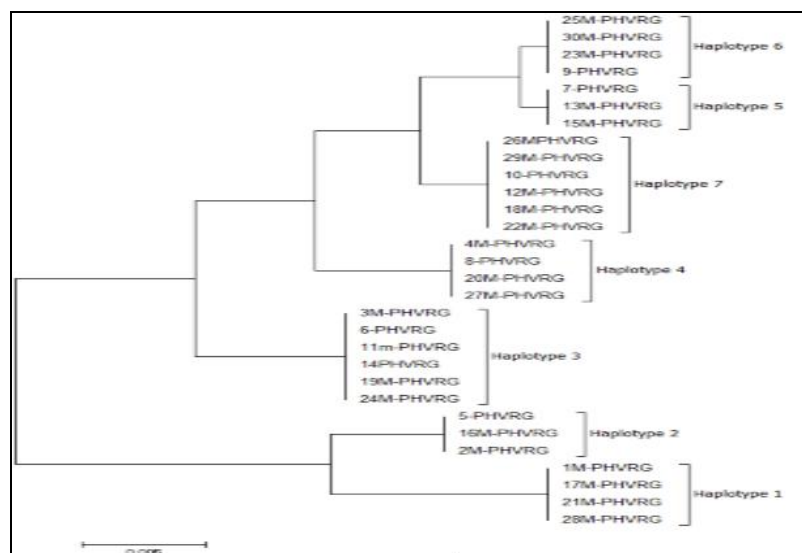
It is now widely agreed that *C. aegagrus* is the wild ancestor of domestic goats, and this finding has been confirmed by the

presence of all "domestic" haplogroups in the current *C. aegagrus* populations. The bovid known as the Wild Goat (*Capra aegagrus*) was the progenitor of the Domestic Goat, although domestic goats have probably been hybridized with other wild goat species in Asia. Wild Goats are found in western Asia (since their introduction in 1970, a free-roaming population maintained by hunting at 500 to 1000 individuals has also existed in New Mexico [U.S.A.]). They live in rocky habitats associated with cliffs from sea level to around 4000 m (but usually below 2500 m). Although in Daghestan they inhabit some montane forests, in general Wild Goats are associated with deserts and semi-arid areas. Natural predators such as Gray Wolves (*Canis lupus*) and Leopards (*Panthera pardus*) have been extirpated in most areas now occupied by Wild Goats. The nucleotide sequence data reported in this paper will appear in the GenBank sequence database *Capra aegagrus* with the accession numbers AB004076.1. Recent analysis of 2,430 domestic goat individuals revealed a total of six different monophyletic mitochondrial DNA (mtDNA) haplogroups A, B, C, D, F, and G, with the A haplogroup representing >90% of individuals. The three goat (*C. hircus*) mtDNA haplogroups (A, B, and C) found by Luikart *et al.* (Figure 1) have been interpreted to indicate three distinct domestication events. By comparing the sequence obtained from district HVR1-of-breed goats Mahabadi sequences of these six groups of haplotypes as a sequence of reference in the study by Nader *et al.* in 2009 took the form of a table in the study that Mahabadi goats belonging to haplotype group A is based on the analysis. (Table 1)



**Fig 1:** The frequency of haplotype groups goat species around the world

**Table 1:** Haplotype diversity phylogeny tree based on HVR1 sequence within Mahabadi goat population



Assuming a single haplotype domesticated per haplogroup and a coalescence time of 10,000 years for the most common A haplogroup, it was hypothesized that the domestication of B and C haplogroups occurred approximately 2,130 and 6,110 years ago, respectively. This result has been explained by some authors (Luikart *et al.* 2001; Amills *et al.* 2009) [20, 39] because goat, owing to its moderate size and ability to adapt to different environments, well-suited to the intercontinental transportation in ancient times. Based on previous literatures, in this study, molecular analysis of Mahabadi goat population based on D-Loop region of mitochondrial DNA were investigated to develop molecular markers for breed identification. In this context, our Mahabadi goat objective was to better understand the domestication process through an extensive analysis of the mtDNA polymorphism. More specifically, using extensive and well-controlled sampling in the field, we aimed to localize the putative domestication centers by finding the present-day wild populations bearing the closest genotypes when compared to the domestic populations. (Naderi *et al.* 2007) [23]. All fragments of the three datasets were aligned and trimmed using Clustal W in MEGA6 Domestic goats (*Capra hircus*) have been selected to play an essential role in agricultural production systems, since being domesticated from their wild progenitor, bezoar (*Capra aegagrus*). A detailed understanding of the genetic consequences imparted by the domestication process remains a key goal of evolutionary genomics. we analyzed ten economic important native goat breeds with domestic goat ancestor.

All of the studied are phenotypically distinct from each other and have very different geographic ranges. The genetic diversity and distribution of mitochondrial haplogroups among these breeds were examined, and the level of maternal introgression of goat populations from different putative domestication centers was also assessed. Finally, to support our genetic data and initiate a detailed documentation of *Capra* biodiversity in Iran, the hypothesis that *C. aegagrus* is the wild progenitor of the Mahabadi domestic goat was evaluated. Domestic Goats are sometimes referred to as *Capra aegagrus hircus*, but Valdez (2011) treats the Domestic Goat as a distinct species, *Capra hircus*. Feral Domestic Goats have a far wider distribution around the world than do true Wild Goats. The endemic goats on Crete and nearby islands, which are often referred to as *C. aegagrus cretica*, look similar to wild *C. aegagrus*, but genetic analyses have indicated that in fact they are actually, as some researchers have suspected, feral domestic goats descended from a very early introduction (Bar-Gal *et al.* 2002; Masseti 2009)

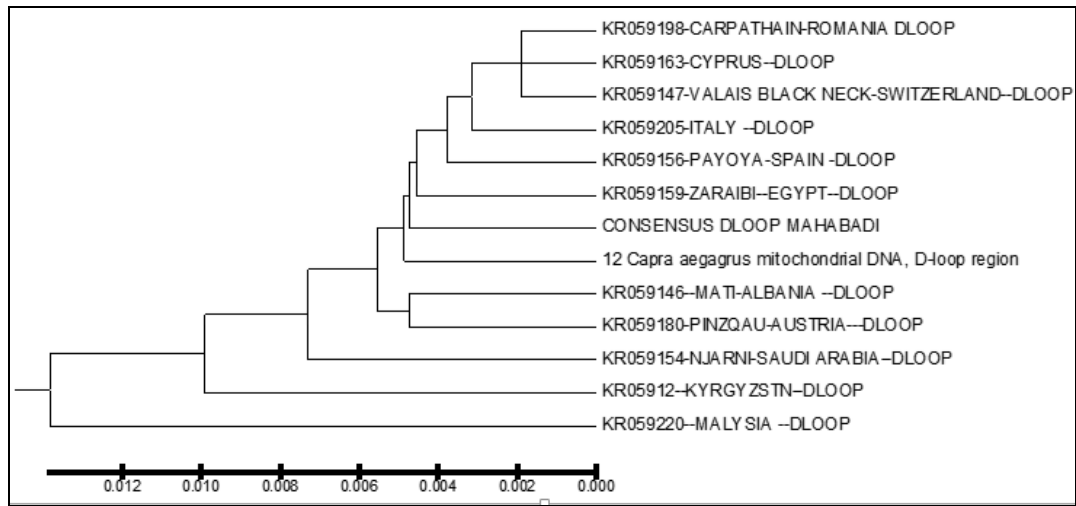
### Materials and Methods

We collected blood samples of native goat from Mahabadi goat. Blood samples (5ml in EDTA Containing tubes) randomly collected from 20 animals and stored at -20°C until used at biotechnology laboratory. We amplified a 598-bp fragment of the mitochondrial hyper variable region 1 (HVR1) between positions 15,653 and

16,250 in the reference goat mitochondrial genome AF533441 [24]. DNA extraction, PCR amplification and sequencing. We collected blood samples of native goat from Mahabadi goat. Blood samples (5ml in EDTA Amplification and sequencing the complete HVR1 region was amplified by using forward primer HVR1-F: 5'-CTATCAACACACCCAAAGCTGAA-3' and reverse primer HVR1-R: 5'-CGGAGCGAGAAGAGGGAT-3'. The forward and reverse primers were designed sequences of the mtDNA genome (Gen Bank accession no. V00654). Polymerase chain reaction (PCR) was carried out in a total volume of 25 ul, containing 10 ug of genomic DNA, 2.5 ul of 10ul buffer, 0.2 mM of dNTP, 10 pM of each primer and 1.5 units of Taq polymerase (TaKaRa, Japan). Thermal cycling was performed on a PTC-200 thermo cycler (MJ Research Inc.) under the following conditions; 2 minute denaturation at 94°C, followed by 35 cycles of 30 s at 94°C, 30 s at 60°C, 60 s at 72°C, and a final 5 min at 72°C before cooling to 4°C for 10 min. The amplified products were separated by electrophoresis on 1% Agarose gels, and were visualized under UV illumination after staining with Ethidium Bromide. The PCR products were purified using QIA quick PCR purification Kit (Qiagen, USA), and were directly sequenced on an ABI 3130xl Genetic Analyzer (PE Applied Biosystems, USA) Statistical and phylogenetic analyses. The sequences of the HVR1 region from different breeds were aligned in CLUSTAL W (Thompson *et al.*, 1994). Numbers of nucleotide polymorphic sites(S) and haplotype (h), nucleotide diversity (Pi),haplotype diversity (Hd) and nucleotide divergence (Dxy) were performed in DNA sequence polymorphism Version 5.1 ( Librado and Rozas, 2009) [43]. The Neighbor-joining (NJ) tree (Saitou and Nei, 1987) [27] among haplotypes based on the HVR1 region sequences was reconstructed in MEGA 5.05 package (Tamura *et al.*, 2011) [17], with the reliability of the tree topology assessed by 1,000 bootstrap replications (Felsenstein, 1985). The NJ tree among breeds was constructed in MEGA 5.05 package on the basis of divergence distances.

### Phylogenetic reconstruction

The sequences obtained were compared by alignment to the international Gene Bank data-base in Chinese (KM 360063), Switzerland (KR059147), Italy (KR059205), Jordan (KR059160), Iran (KR059191), Spain (KR059156), Austria (KR059180), Egypt (KR059159), Turkey (KR059200), Cyprus (KR059163), Saudi Arabia (KR059154), Romania(K059198), Albania (KR059146), Kyrgyzstn (KR059122), Malaysia (KR059220) and *Capra aegagrus* (AB004076.1) using the Bio Edit software program version 7.2 (Hall, 1999) [12]. To investigate genetic relationship between mitochondrial sequences, an un rooted neighbor-joining phylogeny (Saitou and Nei, 1987) [27] was constructed using the Tamura–Nei distance method (Tamura and Nei, 1993). The distance computation and phylogenetic tree construction are incorporated in the MEGA package version 5.1 (Figure 2).



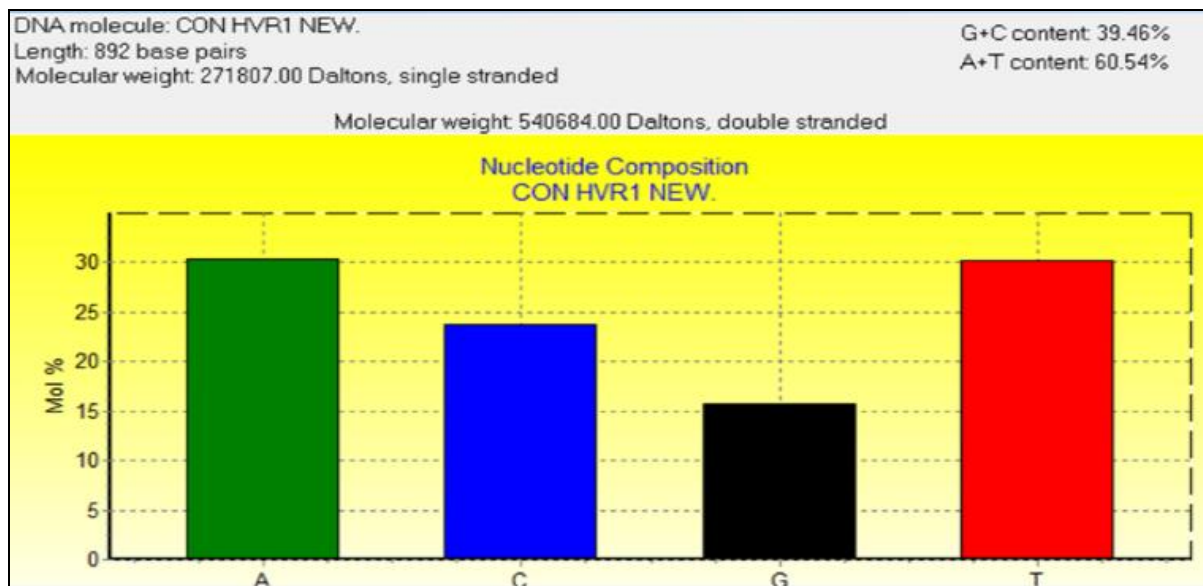
**Fig 2:** Phylogenetic relationship among several native goat and their ancestor (*Capra aegagrus*) of based on HVR1 region from goat breeds.

**Results and Discussion**

(mtDNA variation in Mahabadi goat)

In the present study, we analyzed the mtDNA control region sequences of 30 Mahabadi goats to further elucidate its diversity. There were no insertions and deletions in 30 sequences of HVRI of the control regions. The HVRI sequences were highly polymorphic. Our 30 sequences gave 7 different haplotypes with 44 variable sites defined. The two largest haplotype group consisted of 6 individuals, two haplotype groups included 3 individuals, and three haplotypes included 4 individuals (table1). The average base composition of the control region sequences was as follows; A: 30.38%, C: 23.77%, G: 15.70% and T: 30.16% and the molecular weight of single this sequence was 271807.00 Daltons and the molecular weight of pairs was 540684.00 Daltons and indicates that the caprine mtDNA control region has high A/T contents the control region is rich in A/C contents (Figure 1). This result indicates that Mahabadi goat the between group distances were computed using the MEGA 5.0 software. Distribution of the samples between the groups was made in accordance with the cauterization obtained. Apparently, the longest distance separated the KR059159 (Egypt) and KR059220 (Malaysia) from the others. The shortest distances were among KR059205 (Italy), *Capra aegagrus*

(AB004076.1) and Mabadi goat. It can be reported that native goat from Iran is closed to domestic goat s ancestor. (Figure 4). A sequence analysis of native goat mtDNA revealed a comparative lack of genetic structure, supporting a geographic distribution that confirms the main trends observed in previous studies of mtDNA diversity in goats. A neighbor-joining and parsimony phylogenetic tree constructed using the sequences showed that the domestic goats of Iran and Italy and Spain and the bezoar belong to the same group that this result was confirmed by trees based on the sequence of the mitochondrial displacement loop regions. Phylogenetic analysis was carried out using hyper variable region 1 (896 bp).Mahabadi goat proved to be extremely diverse (average haplotype diversity of 0.999) and the nucleotide diversity values 0.022. These results indicate high-divergence status of the Mahabadi goat and will influence breeding and conservation strategies adopted for this breed.(table 2). Distribution of the samples between the groups was made in accordance with the cluster obtained. This is possible because of geographical distance and it is distributed. The current study constitutes the first assessment of the genetic diversity and population structure of Mahabadi goat populations from the west of Iran and provides the first insights into the genetic history of native goat of Iran.

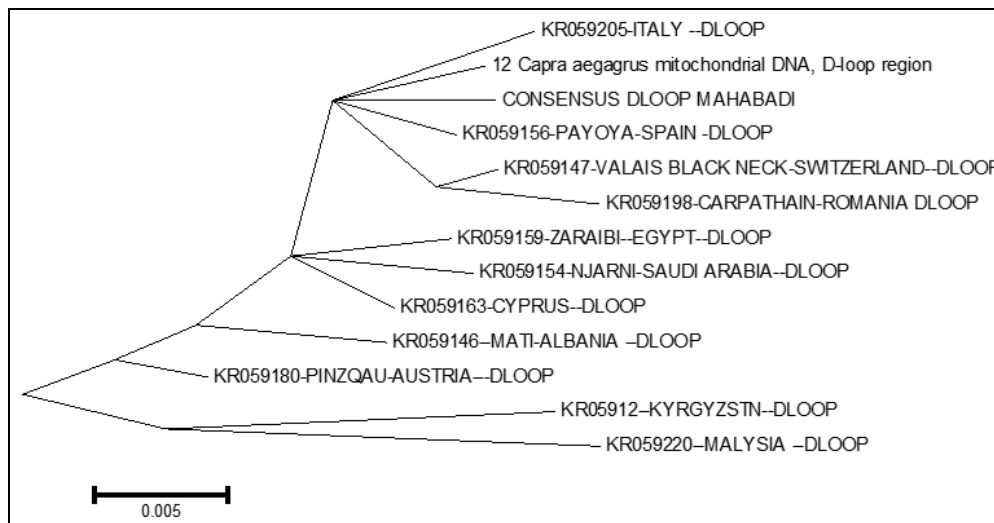


**Fig 3:** diversity composition of the control region sequences of Mahabadi goat population



**Table 2:** diversity composition of the control region sequences of Mahanadi goat population

	A	B	C	D	E	F	G	H	I	J	K	L	M
1	KR059205-ITALY --DLOOP												
2	12_Capra_aegagrus_mitochondrial_DNA_D-loop_region	0.0000											
3	CONSENSUS_DLOOP_MAHABADI	0.0045	0.0045										
4	KR059147-VALAIS_BLACK_NECK-SWITZERLAND--DLOOP	0.0090	0.0090	0.0135									
5	KR059146--MATI-ALBANIA --DLOOP	0.0135	0.0135	0.0181	0.0226								
6	KR059159-ZARAIBI--EGYPT--DLOOP	0.0045	0.0045	0.0090	0.0136	0.0181							
7	KR059154-NJARNI-SAUDI_ARABIA--DLOOP	0.0135	0.0135	0.0180	0.0225	0.0180	0.0090						
8	KR05912--KYRGYZSTN--DLOOP	0.0541	0.0541	0.0586	0.0541	0.0496	0.0497	0.0405					
9	KR059156-PAYOYA-SPAIN _DLOOP	0.0085	0.0078	0.0045	0.0090	0.0135	0.0045	0.0135	0.0541				
10	KR059220--MALYSIA _DLOOP	0.0359	0.0360	0.0405	0.0449	0.0494	0.0315	0.0314	0.0539	0.0360			
11	KR059198-CARPETHAIN-ROMANIA_DLOOP	0.0226	0.0226	0.0271	0.0226	0.0271	0.0271	0.0271	0.0586	0.0226	0.0495		
12	KR059180-PINZQAU-AUSTRIA--DLOOP	0.0090	0.0090	0.0136	0.0181	0.0226	0.0045	0.0045	0.0451	0.0090	0.0270	0.0316	
13	KR059163-CYPRUS--DLOOP	0.0135	0.0135	0.0181	0.0226	0.0271	0.0090	0.0180	0.0496	0.0135	0.0315	0.0361	0.0135

**Fig 4:** Phylogenetic relationship among several native goat and their ancestor (*Capra aegagrus*)

### Acknowledgement

The authors acknowledged the three reviewers for constructive comments on the manuscript. We gratefully acknowledge all farmers who took part in the present study, giving access to the animals. This study provides the first insights into the genetic diversity and evolutionary background of domestic goats in Iran and provides a basis for further studies on the temporal fluctuations of domestic goat populations. The inclusion of more samples of wild goat species or ancient goats in future studies will provide additional insights into the history and gene flow of goat populations in Iran.

### References

1. Agaviezor BO, Adefenwa MA, Peters SO, Yakubu A, Ade-bambo OA, Ozoje MO *et al.* Genetic diversity analysis of the mitochondrial D-loop of Nigerian indigenous sheep. *Anim. Gen. Resour.* 2012; 50:13-20.
2. Arnason U, Gullberg A, Johnsson E, Ledje C. The nucleotide sequence of the mitochondrial DNA molecule of the grey seal, *Halichoerus grypus* and a comparison with the mitochondrial sequences of other true seals. *J Mol. Evol.* 1993; 37:323-330.
3. Arnason U, Gullberg A, Widegren B. The complete nucleotide sequence of the mitochondrial DNA of the  $\phi$ n whale *Balaenoptera physalus*. *J Mol. Evol.* 1991; 33:556-568.
4. Ameur A, Stewart JB, Freyer C, Hagstro E, Ingman M, Ran N, Larsson G *et al.* Ultra-deep sequencing of mouse mitochondrial DNA: mutational patterns and their origins. *PLoS Genet.* 2011; 7:1-15.
5. Anderson S, De Bruijn MHL, Colson AR, Eperon IC, Sanger F, Young IG. Complete sequence of bovine mitochondrial DNA conserved features of the mammalian mitochondrial genome. *J Mol. Biol.* 1982; 156:683-692.
6. Brown WM, George MJ, Wilson AC. Rapid evolution of animal mitochondrial DNA. *Proc. Nat. Acad. Sci. USA.* 1979; 76:1967-1971.
7. Chen SY, Su YH, Wu SF, Sha T, Zhang YP. Mitochondrial diversity and phylogeography structure of Chinese domestic goats. *Mol. Phylogenetic. Evol.* 2005; 73:804-814.
8. Çinar Kul B, Ertugrul O. mtDNA diversity and phylogeography of some Turkish native goat breeds. *Ankara Üniv. Vet. Fak. Derg.* 2011; 58:129-134.
9. Cozzi MC, Strillacci MG, Valianti P, Bighignoli B, Cancedda M, Zanotti M. Mitochondrial D-loop sequence variation among Italian horse breeds. *Genet. Sel. Evol.* 2004; 36:663-672.
10. Foren DR, Hixson JE, Brown WM. Comparisons of ape and human sequences that regulate mitochondrial DNA transcription and D-loop DNA synthesis. *Nucleic Acids. Res.* 1988; 16:5841-5861.

11. Ghivizzani SC, Madsen CS, Hauswirth WM. In organello foot printing: analysis of protein binding at regulatory regions in bovine mitochondrial DNA. *J Biol. Chem.* 1993; 268:8675-8682.
12. Hall TA. Bio edit: a user-friendly biological sequence alignment editor and analysis program for Windows 95/98/NT. *Nucleic Acids. Symp. Ser.* 1999; 41:95-98.
13. Hoda A, Bicoku Y, Dobi P. Genetic diversity of Albanian goat breeds revealed by mtDNA sequence variation. *Biotechnol. Bio tec. Equip.* 2014; 28:77-81.
14. Hoque MR, Choi NR, Sultana H, Kang BS, Heo KN, Hong SK. *et al.* Phylogenetic analysis of a privately-owned Korean Native chicken population using mtDNA D-loop variations. *Asian-Australas J Anim. Sci.* 2013; 26:157-162.
15. Ilie DE, Cean A, Cziszer LT, Gavojdian D, Ivan A, Kusza S. Microsatellite and mitochondrial DNA study of native eastern European cattle populations: the case of the Romanian Grey. *PLoS One.* 2015; 10:1-18.
16. Joshi MB, Rout PK, Mandal AK, Tyler-Smith C, Singh L, Thangaraj K. Phylogeography and origin of Indian domestic goats. *Mol. Biol. Evol.* 2004; 21: 454-462.
17. Kumar S, Tamura K, Jakobsen IB, Nei M. MEGA3.1: Molecular Evolutionary Genetics Analysis Software. Arizona State University Press, Tempe, USA, 2004.
18. Li KY, Li KT, Cheng CC, Chen CH, Hung CY, Ju YT. A genetic analysis of Taoyuan pig and its phylogenetic relationship to Eurasian pig breeds. *Asian-Australas J Anim. Sci.* 2014; 28:457-466.
19. Liu ZG, Lei CZ, Luo J, Ding C, Chen GH, Chang H. Genetic variability of mtDNA sequences in Chinese native chicken breeds. *Asian-Australas J Anim. Sci.* 2006; 17:903-909.
20. Luikart G, Gielly L, Excoffier L, Vigne JD, Bouvet J, Taberlet P. Multiple maternal origins and weak phylogeographic structure in domestic goats. *Proc. Nat. Acad. Sci. USA.* 2001; 98:5927-5932.
21. Mignotte F, Gueride M, Champagne AM, Mounolou JC. Direct repeats in the non-coding region of mitochondrial DNA. Involvement in the generation of intra and inter-individual heterogeneity. *European J Biochem.* 1990; 194:561-571.
22. Moradi MH, Rostamzadeh J, Rashidi A, Vahabi K, Farah-mand H. Analysis of genetic diversity in Iranian mo-hair goat and its color types using Inter Simple Sequence Re-peat (ISSR) markers. *Agric. Commod.* 2014; 2:55-62.
23. Naderi S, Rezaei HR, Taberlet P, Zundel S, Rafat SA, Na-ghash HR. Large-scale mitochondrial DNA analysis of the domestic goat reveals six haplogroups with high diversity. *PloS One.* 2007; 2:1-10.
24. Pakpahan S, Tunas Artama W, Widayanti R, Suparta G. Genetic variations and the origin of native Indonesian goat breeds based on mtDNA D-Loop sequences. *Asia J Anim. Sci.* 2015; 9:341-350.
25. Rozas J, Sachedelbarrio JC, Messeguer X, Rozas R. DnaSP, DNA polymorphism analyses by the coalescent and other methods. *Bioinformatics.* 2003; 19:2496-2497.
26. Saccone C, Pesole G, Sbisà E. The main regulatory region of mammalian mitochondrial DNA: structure function model and evolutionary pattern. *J Mol. Evol.* 1991; 33:83-91.
27. Saitou N, Nei M. The neighbor-joining method: a new method for reconstructing phylogenetic trees. *Mol. Biol. Evol.* 1987; 4:406-425.
28. Sultana S, Mannen H, Tsuji S. Mitochondrial DNA diversity of Pakistani goats. *Anim. Genet.* 2003; 34:417-421.
29. Taberlet P, Valentini A, Rezaei HR, Naderi S, Pompanon F, Negrini R *et al.* Are cattle, sheep, and goats endangered species. *Mol. Ecol.* 2008; 17:275-284.
30. Tamura K, Nei M. Estimation of the number of nucleotide substitutions in the control region of mitochondrial DNA in humans and chimpanzees. *Mol. Biol. Evol.* 1993; 10:512-526.
31. Wilson AC, Cann RL, Carr SM, George M, Gyllensten UB, Helm-Bychowski KM, Higuchi RJ. Mitochondrial DNA and two perspectives on evolutionary genetics. *Biol. J Linn. Soc.* 1985; 26:375-400.
32. Xu X, Gullberg A, Arnason U. The complete mitochondrial DNA (mtDNA) of the donkey and mtDNA comparisons among four closely related mammalian species pairs. *J Mol. Evol.* 1996; 43:438-446.
33. Zernekova C, Kott T, Majzlik I. Mitochondrial D-loop sequence variation among Hucul horse. *Czech J Anim. Sci.* 2013; 58:437-442.
34. Naderi S, Rezaei HR, Taberlet P, Zundel S, Rafat SA, Naghash HR *et al.* Large-scale mitochondrial DNA analysis of the domestic goat reveals six haplogroups with high diversity. *PLoS ONE* 2, e1012. 2007.
35. Parma P, Feligini M, Greppi G, Enne G. The complete nucleotide sequence of goat (*Capra hircus*) mitochondrial genome. *DNA Seq.* 2003; 14:199-203.
36. Luikart G, Gielly L, Excoffier L, Vigne JD, Bouvet J, Taberlet P. Multiple maternal origins and weak phylogeography structure in domestic goats. *Proceedings of the National Academy of Sciences USA.* 2001; 98:5927-32.
37. Saitou N, Nei M. The neighbor-joining method: A new method for reconstructing phylogenetic trees. *Molecular Biology and Evolution.* 1987; 4:406-425.
38. Amer SAM. Mitochondrial DNA Variability among Some Saudi Arabian Goat Breeds. *British Biotechnology Journal.* 2014; 4(8):877-882.
39. Amills M, Ramirez O, Tomas A, Badaoui B, Marmi J, Acosta J, Sanchez A *et al.* Mitochondrial DNA diversity and origins of South and Central American goats. *Anim. Genet.* 2009; 40:315-322.
40. Avise JC. Molecular markers, natural history and evolution. Chapman & Hall, New York, N.Y. Boyazoglu J, Hatziminaoglou I, Morand-Fehr P. The role of the goat in society: past, present and perspectives for the future. *Small Rumin. Res.* 1994-2005; 60:13-23.
41. Esposti MD, Crimi M, Ghelli A, Patarnello T, cytochrome b: evolution and structure of the protein. *In: Biochem. Bio phys. Acta.* 1994; 1143(3):243-271.
42. Howell N. Evolutionary conservation of protein regions in the proton motive cytochrome b and their possible roles in redox catalysis. *In: J Mol. Evol.* 1989; 29(2):157-169.
43. Librado P, Rozas J. DnaSP v5: A software for comprehensive analysis of DNA polymorphism data. *Bioinformatics.* 2009; 25:1451-1452.